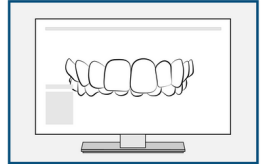


Congratulations!

An orthodontist has closely examined your case and has confirmed you are a candidate for orthodontic treatment to improve your overall dental health.

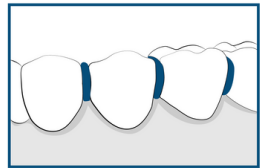
Step 1:

3D digital imaging of the teeth.



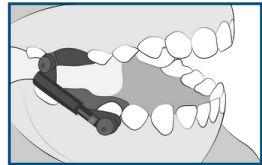
Step 2:

Placement of Separators (Spacers) in between the back teeth approximately one week prior to placing the Herbst to maintain space for the appliance to fit comfortably.



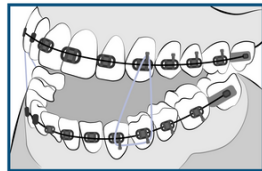
Step 3:

Removal of Separators and placement of the Herbst Appliance. The appliance itself stays in place for 9-12 months because once we adjust the bite, it needs time to settle into place.



Step 4:

Top braces are placed. The bottom braces are generally placed a few months after the top. For most patients the Herbst Appliance is removed before the bottom braces start. Many times rubber bands will be necessary to settle the bite into a correct and healthy position. You will then be seen every few months for braces adjustments until the desired tooth and bite position is acquired.



Step 5:

Removal of all brackets and placement of upper and lower clear plastic retainers. Retainers will be worn full time for a few days, then 12hrs a day for a year, then night time for a lifetime to stabilize and maintain your hard work.



Your estimated total treatment time: _____